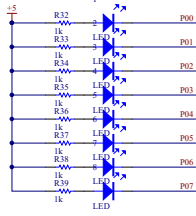
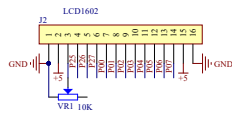


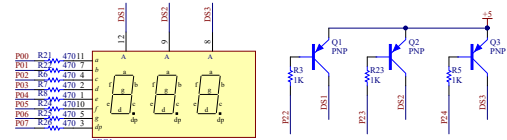
51单片机最小系统



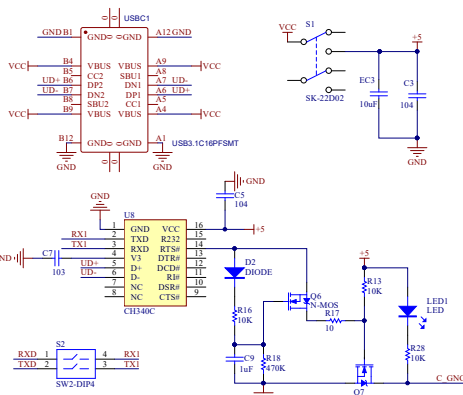
8位流水灯



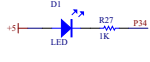
LCD1602接口



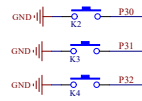
三位共阳数码管



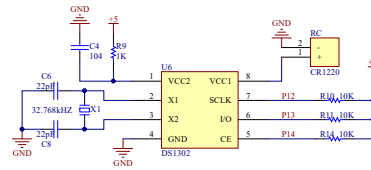
USB转TTL自动下载



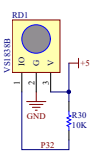
LED灯



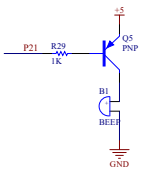
独立按键



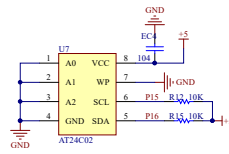
时钟模块



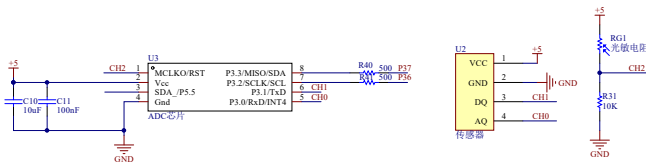
红外接收管



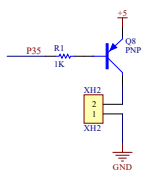
蜂鸣器



存储模块



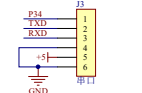
ADC电路



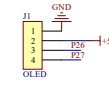
PWM控制电机



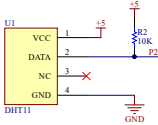
舵机



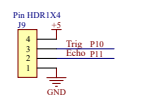
无线通讯模块



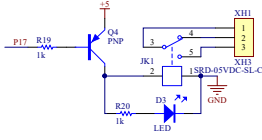
显示模块



温湿度传感器



超声波测距模块



继电器控制输出

致敬爱的读者：

本开发板资料会不断更新，更新地址一切以下面的网站为主，教学视频等也都会同步更新，希望大家可以不断的更新自己知识库遇到问题也可以在网站提出问题，我们会有技术员工对接处理的。

www.fastboard.cn